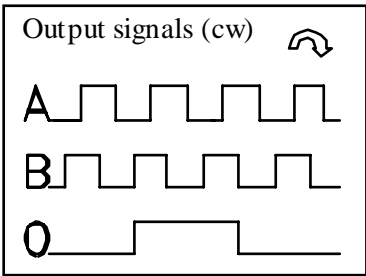


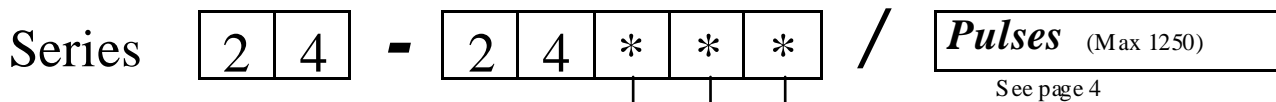
Series 24

Electronics Data



Power supply: from 5 to 24V depends on the electronics circuit
 Current consumption 40/80mA depends on the electronics circuit
 Permissible load: 20mA
 Frequency: 100KHz
 Protections: Against short circuit, reversal polarity
 Operating Temp.: -20/+60°C

Ordering code



Output

7 0	= AB	NPN	5..24V
0 0	= AB0	NPN.	5..24V
7 A	= AB	Open C.	5..24V
0 A	= AB0	Open C.	5..24V
2 B	= AB+ \overline{AB}	PP	8..24V
1 B	= AB0+ $\overline{AB0}$	PP	8..24V
6 0	= AB+ \overline{AB}	LD	5V
8 0	= AB0+ $\overline{AB0}$	LD	5V

Connections

0	= Cable 5P Axial
2	= Cable 8P Axial
1	= 9415 9P Axial.
3	= 9414 5P Axial
R	= Cable 5P Radial
8	= Cable 8P Radial

Connections

	0 Volt	+ Volt	A	B	\overline{A}	\overline{B}	0	$\overline{0}$
Cable 5 Way	White	Brown	Green	Yellow			Gray	
Cable 8 Way	Black	Blue	Brown	Beige	Green	Yellow	Pink	Violet
Connector 9415	Pin1	Pin2	Pin3	Pin4	Pin5	Pin6	Pin7	Pin8
Connector 9414	Pin1	Pin2	Pin3	Pin4			Pin5	