

Series PRH

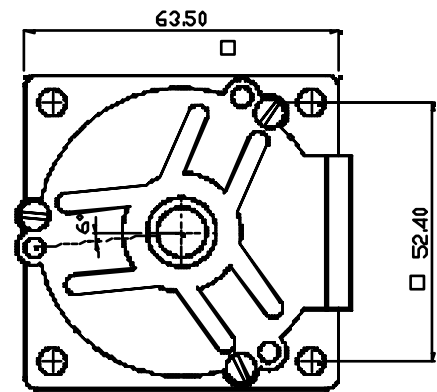
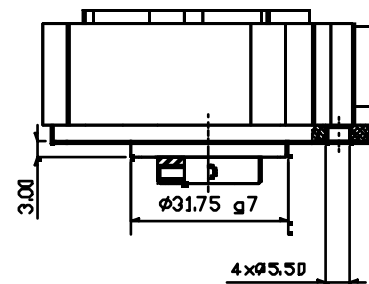
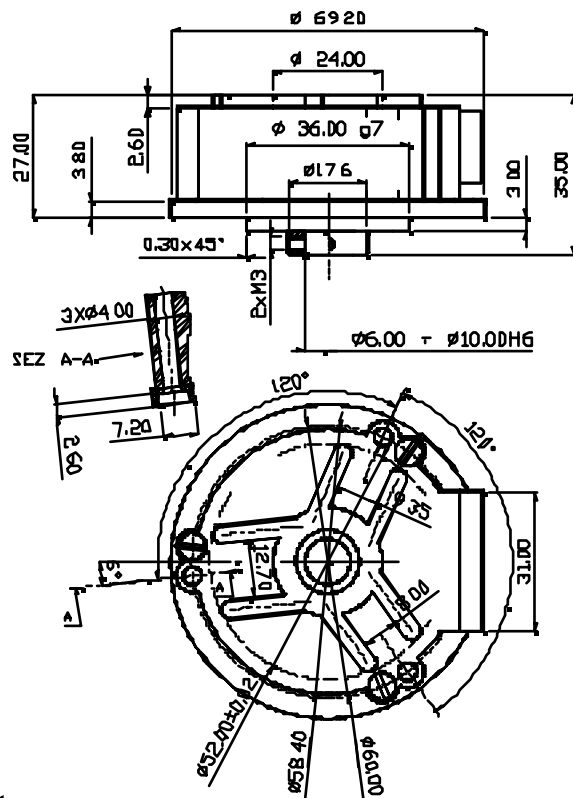
Incremental hollow shaft encoder,
high settlement; self-aligning system panted
with Hall effect

Mechanics Data

Cover:	SMC fiber glass + ABS
Body:	Aluminium
Solid shaft:	Stainless steel
Bearings:	2, ballraces
Weight:	Approx. 150gr.
Protection:	IP65
Rpm:	6000 Max
Torque:	3Ncm
Inertia:	40gcm ²
Shaft loading:	Axial 30N - Radial 30N
Recovery max value:	Angular 1,5° - 0,5mm axial and radial



Dimensions in mm.

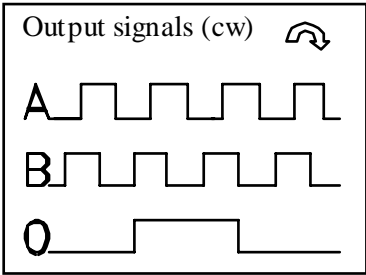


1

6

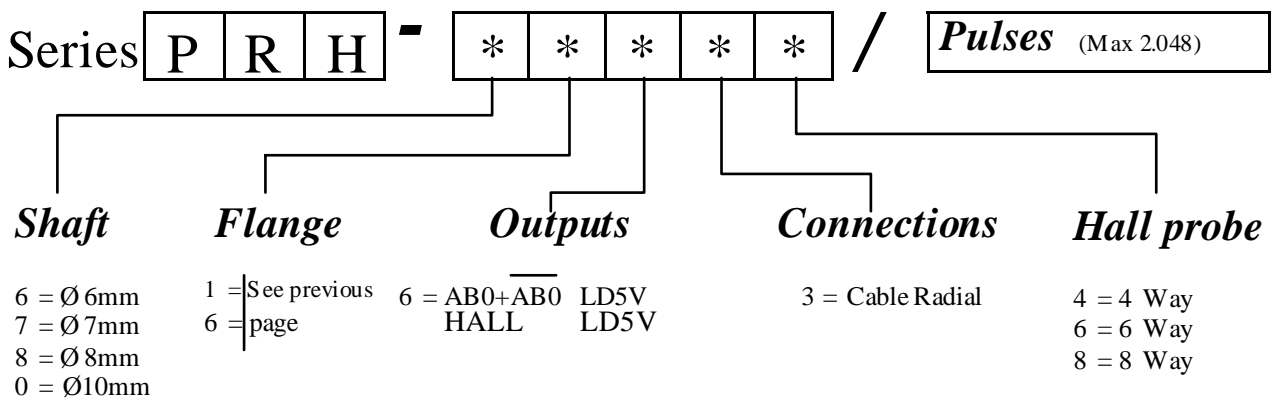
Series PRH

Electronics Data



Power supply: from 5 to 24V depends on the electronics circuit
 Current consumption: 40/80mA depends on the electronics circuit
 Permissible load: 20mA
 Frequency: 160KHz
 Protections: Against short circuit, reversal polarity
 Operating Temp.: -20/+60°C (extension on request)

Ordering code



Connections

	Incremental encoder								Hall			
	-	+	A	B	\bar{A}	\bar{B}	0	$\bar{0}$	H0	H1	H2	
	1	2	3	4	5	6	7	8	9	10	11	
Cable	B L A C K	B L U E	B R O W N	B E I G E	G R E E N	Y E L L O W	P I N K	V I O L E T	O R A N G E	T R A S P A R	Y E L L O W	G R E E N