

# Series PM

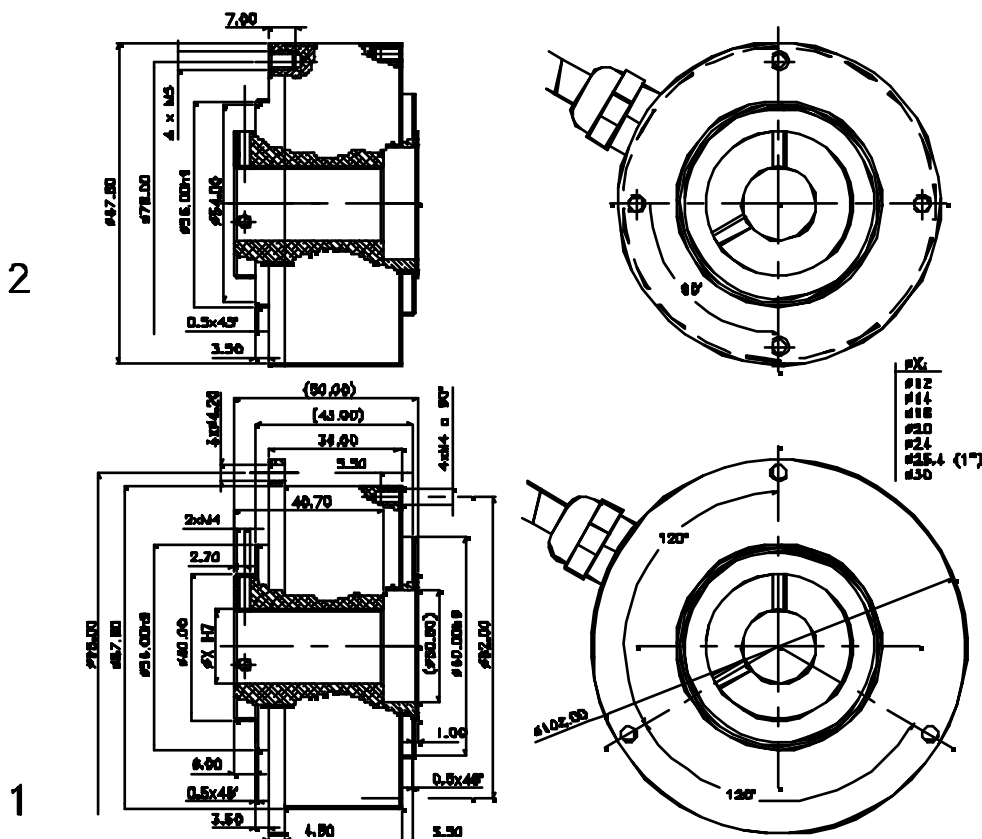
Incremental hollow shaft encoder,  
high settlement;  
self-aligning system panted

## Mechanics Data

Cover:	Aluminium
Body:	Aluminium
Solid shaft:	Stainless steel
Bearings:	2, ballraces
Weight:	Approx.800gr.
Protection:	IP55
Rpm:	3000 Max
Torque:	3,5Ncm
Inertia:	60gcm <sup>2</sup>
Shaft loading:	Axial 50N - Radial 50N (max value)

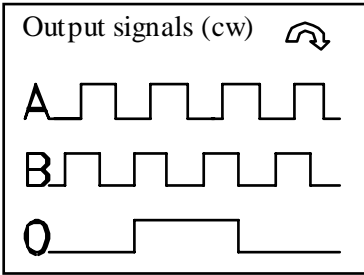


Dimensions mm.



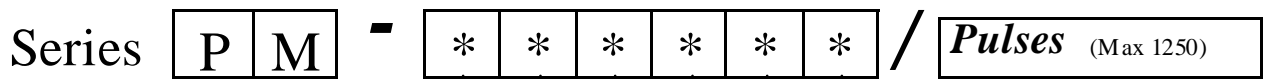
# Series PM

## Electronics Data



Power supply: from 5 to 24V depends on the electronics circuit  
 Current consumption: 40/80mA depends on the electronics circuit  
 Permissible load: 20/40mA depends on the electronics circuit  
 Frequency: 100KHz  
 Protections: Against short circuit, reversal polarity  
 Operating Temp.: -10/+50°C

### Ordering code



#### Shaft

- 15 = Ø15mm
- 20 = Ø20mm
- 25 = Ø25,4mm
- 30 = Ø30mm

On request other Ø

#### Flange

- 1 = See previous page
- 2 = See previous page

#### Outputs

- P = AB0+ $\overline{AB0}$  PP11/28V
- C = AB0 OC11/28V
- H = AB0 NPN 11/28V
- 6 = AB0+ $\overline{AB0}$  LD5V
- 9 = AB0+ $\overline{AB0}$  LD5/12V
- T = AB0+ $\overline{AB0}$  LD15/24V  
(out 12V - 20mA channel)
- K = AB0+ $\overline{AB0}$  LD15/24  
(out 5V - 20mA channel)

#### Connections

- 1 = 9415 Radial
- 3 = Cable Radial
- 5 = 9416 Radial

#### Options

- 0 = None
- Z = Synchronised zero pulse to 180° only for Line Driver
- W = Synchronised zero pulse to 90° only for Line Driver
- A = Special connections

### Connections

	0 Volt	+ Volt	A	B	$\overline{A}$	$\overline{B}$	0	$\overline{0}$
<b>Cable 5 Way</b>	White	Brown	Green	Yellow				Gray
<b>Cable 8 Way</b>	Black	Blue	Brown	Beige	Green	Yellow	Pink	Violet
<b>Connector 9416-9415</b>	Pin1	Pin2	Pin3	Pin4	Pin5	Pin6	Pin7	Pin8